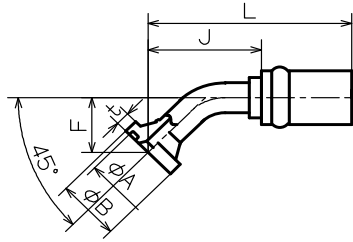


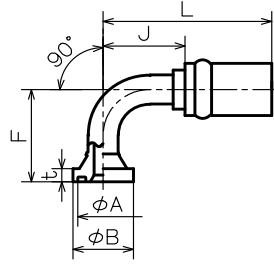
| ホース | ヘッド サイズ | コード | 品名 | ΦB | ΦA | t | J | L | | CL | 適用Oリング |
|-----|------------|---------|--------------|------|-------|-----|------|-----|--|----|-----------|
| 6 | | | | | | | | | | | |
| 9 | | | | | | | | | | | |
| 12 | 08 | 6420244 | GX3F-08 | 30.2 | 25.46 | 6.7 | 51 | 86 | | 57 | AN6227-15 |
| | 12 | 6420243 | GX3F-0812 | 38.1 | 31.81 | 6.7 | 20 | 55 | | 26 | AN6227-19 |
| | 16 | 6424625 | GX3F-0816 | 44.5 | 39.68 | 8 | 28 | 63 | | 34 | AN6227-24 |
| 15 | 08 | 6421099 | GX3F-1008 | 30.2 | 25.46 | 6.7 | 51.2 | 87 | | 58 | AN6227-15 |
| | 12 | 6421100 | GX3F-1012 | 38.1 | 31.81 | 6.7 | 54 | 90 | | 61 | AN6227-19 |
| | 16 | 6421101 | GX3F-1016 | 44.5 | 39.68 | 8 | 28 | 64 | | 35 | AN6227-24 |
| 19 | 08 | 6420826 | GX3F-1208 | 30.2 | 25.46 | 6.7 | 51.2 | 98 | | 60 | AN6227-15 |
| | 12 | 6420825 | GX3F-12 | 38.1 | 31.81 | 6.7 | 54 | 101 | | 63 | AN6227-19 |
| | 12 | 6420855 | GX3FPLG-12 | 38.1 | - | 6.7 | 54 | 101 | | 63 | テールホース用 |
| | 16 | 6420827 | GX3F-1216 | 44.5 | 39.68 | 8 | 50 | 97 | | 59 | AN6227-24 |
| | 20 | 6420806 | GX3F-1220 | 50.8 | 44.51 | 8 | 41 | 88 | | 50 | AN6227-27 |
| 25 | 12 | 6429223 | GXB 3F-1612 | 38.1 | 31.81 | 6.7 | 71 | 127 | | 82 | AN6227-19 |
| | 16 | 6429201 | GXB 3F-16 | 44.5 | 39.68 | 8 | 65 | 121 | | 75 | AN6227-24 |
| | 16 | 6429226 | GXB 3FPLG-16 | 44.5 | - | 8 | 65 | 121 | | 75 | テールホース用 |
| | 20 | 6429224 | GXB 3F-1620 | 50.8 | 44.51 | 8 | 65 | 121 | | 75 | AN6227-27 |
| | 24 | 6429225 | GXB 3F-1624 | 60.3 | 53.84 | 8 | 25 | 81 | | 35 | AN6230-3 |

CL:ホース切断時に差し引く長さ(参考値)



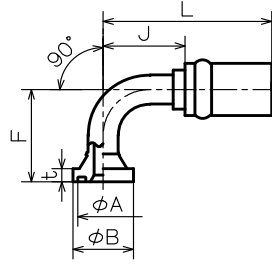
| ホース | ヘッド サイズ | コード | 品名 | ΦB | ΦA | t | F | J | L | CL | 適用Oリング |
|-----|------------|---------|-------------------|------|-------|-----|-----|-----|-----|-----|-----------|
| 6 | | | | | | | | | | | |
| 9 | | | | | | | | | | | |
| 12 | 08 | 6420249 | GX453F-08 | 30.2 | 25.46 | 6.7 | 22 | 51 | 86 | 57 | AN6227-15 |
| | 12 | 6420248 | GX453F-0812 | 38.1 | 31.81 | 6.7 | 30 | 59 | 94 | 65 | AN6227-19 |
| | 16 | 6424626 | GX453F-0816 | 44.5 | 39.68 | 8 | 35 | 64 | 99 | 70 | AN6227-24 |
| 15 | 08 | 6421180 | GX453F-1008 | 30.2 | 25.46 | 6.7 | 24 | 61 | 97 | 68 | AN6227-15 |
| | 12 | 6421178 | GX453F-1012 | 38.1 | 31.81 | 6.7 | 26 | 64 | 100 | 71 | AN6227-19 |
| | 12 | 6422484 | GX453F-060-1012 | 38.1 | 31.81 | 6.7 | 60 | 98 | 134 | 105 | AN6227-19 |
| | 12 | 6424182 | GX453F-085-1012 | 38.1 | 31.81 | 6.7 | 85 | 123 | 159 | 130 | AN6227-19 |
| | 16 | 6421183 | GX453F-1016 | 44.5 | 39.68 | 8 | 29 | 67 | 103 | 74 | AN6227-24 |
| 19 | 08 | 6420835 | GX453F-1208 | 30.2 | 25.46 | 6.7 | 26 | 72 | 119 | 81 | AN6227-15 |
| | 12 | 6420834 | GX453F-12 | 38.1 | 31.81 | 6.7 | 27 | 73 | 120 | 82 | AN6227-19 |
| | 12 | 6424781 | GX453F-045-12 | 38.1 | 31.81 | 6.7 | 45 | 85 | 132 | 94 | AN6227-19 |
| | 12 | 6420833 | GX453F-060-12 | 38.1 | 31.81 | 6.7 | 60 | 98 | 145 | 107 | AN6227-19 |
| | 12 | 6421529 | GX453F-070-12 | 38.1 | 31.81 | 6.7 | 70 | 108 | 155 | 117 | AN6227-19 |
| | 12 | 6420811 | GX453F-100-12 | 38.1 | 31.81 | 6.7 | 100 | 138 | 185 | 147 | AN6227-19 |
| | 16 | 6420836 | GX453F-1216 | 44.5 | 39.68 | 8 | 31 | 69 | 116 | 78 | AN6227-24 |
| | 16 | 6426444 | GX453F-070-1216 | 44.5 | 39.68 | 8 | 70 | 108 | 155 | 117 | AN6227-24 |
| | 20 | 6425099 | GX453F-1220 | 50.8 | 44.51 | 8 | 35 | 81 | 128 | 90 | AN6227-27 |
| | 12 | 6428614 | GX453F-043-12J108 | 38.1 | 31.81 | 6.7 | 43 | 108 | 155 | 117 | AN6227-19 |
| 25 | 12 | 6429304 | GXB 453F-1612 | 38.1 | 31.81 | 6.7 | 26 | 64 | 120 | 74 | AN6227-19 |
| | 16 | 6429203 | GXC 453F-16 | 44.5 | 39.68 | 8 | 28 | 76 | 132 | 86 | AN6227-24 |
| | 16 | 6429375 | GXB 453F-040-16 | 44.5 | 39.68 | 8 | 40 | 88 | 144 | 98 | AN6227-24 |
| | 20 | 6429350 | GXC 453F-1620 | 50.8 | 44.51 | 8 | 36 | 80 | 136 | 90 | AN6227-27 |
| | 24 | 6429391 | GXC 453F-1624 | 60.3 | 53.84 | 8 | 31 | 79 | 135 | 90 | AN6230-3 |

CL:ホース切断時に差し引く長さ(参考値)



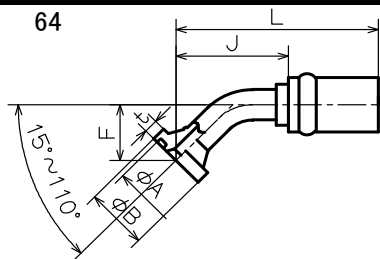
| ホース | ヘッド サイズ | コード | 品名 | ΦB | ΦA | t | F | J | L | CL | 適用Oリング |
|-----|------------|---------------|-----------------|-------|-------|-----|-----|-----|-----|-----------|-----------|
| 6 | | | | | | | | | | | |
| 9 | | | | | | | | | | | |
| 12 | 08 | 6420253 | GX903F-08 | 30.2 | 25.46 | 6.7 | 43 | 52 | 87 | 58 | AN6227-15 |
| | 08 | 6430037 | GX903F-060-08 | 30.2 | 25.46 | 6.7 | 60 | 55 | 90 | 61 | AN6227-15 |
| | 08 | 6435710 | GX903F-070-08 | 30.2 | 25.46 | 6.7 | 70 | 52 | 87 | 58 | AN6227-15 |
| | 08 | 6420251 | GX903F-090-08 | 30.2 | 25.46 | 6.7 | 90 | 55 | 90 | 61 | AN6227-15 |
| | 08 | 6431024 | GX903F-120-08 | 30.2 | 25.46 | 6.7 | 120 | 52 | 87 | 58 | AN6227-15 |
| | 08 | 6420250 | GX903F-130-08 | 30.2 | 25.46 | 6.7 | 130 | 55 | 90 | 61 | AN6227-15 |
| | 08 | 6424691 | GX903F-150-08 | 30.2 | 25.46 | 6.7 | 150 | 55 | 90 | 61 | AN6227-15 |
| | 12 | 6420252 | GX903F-0812 | 38.1 | 31.81 | 6.7 | 55 | 52 | 87 | 58 | AN6227-19 |
| | 12 | 6431083 | GX903F-080-0812 | 38.1 | 31.81 | 6.7 | 80 | 52 | 87 | 58 | AN6227-19 |
| | 12 | 6425583 | GX903F-090-0812 | 38.1 | 31.81 | 6.7 | 90 | 52 | 87 | 58 | AN6227-19 |
| | 12 | 6431085 | GX903F-100-0812 | 38.1 | 31.81 | 6.7 | 100 | 52 | 87 | 58 | AN6227-19 |
| | 12 | 6430097 | GX903F-120-0812 | 38.1 | 31.81 | 6.7 | 120 | 52 | 87 | 58 | AN6227-19 |
| | 16 | 6422458 | GX903F-0816 | 44.5 | 39.68 | 8 | 54 | 52 | 87 | 58 | AN6227-24 |
| 15 | 08 | 6421181 | GX903F-1008 | 30.2 | 25.46 | 6.7 | 50 | 50 | 86 | 57 | AN6227-15 |
| | 08 | 6424458 | GX903F-090-1008 | 30.2 | 25.46 | 6.7 | 90 | 50 | 86 | 57 | AN6227-15 |
| | 08 | 6424740 | GX903F-120-1008 | 30.2 | 25.46 | 6.7 | 120 | 50 | 86 | 57 | AN6227-15 |
| | 08 | 6420808 | GX903F-130-1008 | 30.2 | 25.46 | 6.7 | 130 | 50 | 86 | 57 | AN6227-15 |
| | 12 | 6421179 | GX903F-1012 | 38.1 | 31.81 | 6.7 | 56 | 64 | 100 | 71 | AN6227-19 |
| | 12 | 6424181 | GX903F-100-1012 | 38.1 | 31.81 | 6.7 | 100 | 64 | 100 | 71 | AN6227-19 |
| | 12 | 6422485 | GX903F-120-1012 | 38.1 | 31.81 | 6.7 | 120 | 64 | 100 | 71 | AN6227-19 |
| | 12 | 6424459 | GX903F-150-1012 | 38.1 | 31.81 | 6.7 | 150 | 64 | 100 | 71 | AN6227-19 |
| | 16 | 6421182 | GX903F-1016 | 44.5 | 39.68 | 8 | 63 | 64 | 100 | 71 | AN6227-24 |
| 19 | 08 | 6420861 | GX903F-1208 | 30.2 | 25.46 | 6.7 | 54 | 64 | 111 | 73 | AN6227-15 |
| | 08 | 6422541 | GX903F-070-1208 | 30.2 | 25.46 | 6.7 | 70 | 64 | 111 | 73 | AN6227-15 |
| | 08 | 6420842 | GX903F-090-1208 | 30.2 | 25.46 | 6.7 | 90 | 64 | 111 | 73 | AN6227-15 |
| | 08 | 6424825 | GX903F-120-1208 | 30.2 | 25.46 | 6.7 | 120 | 64 | 111 | 73 | AN6227-15 |
| | 08 | 6420818 | GX903F-130-1208 | 30.2 | 25.46 | 6.7 | 130 | 64 | 111 | 73 | AN6227-15 |
| | 08 | 6420865 | GX903F-150-1208 | 30.2 | 25.46 | 6.7 | 150 | 64 | 111 | 73 | AN6227-15 |
| | 08 | 6420817 | GX903F-200-1208 | 30.2 | 25.46 | 6.7 | 200 | 64 | 111 | 73 | AN6227-15 |
| | 12 | 6420859 | GX903F-12 | 38.1 | 31.81 | 6.7 | 55 | 64 | 111 | 73 | AN6227-19 |
| | 12 | 6420841 | GX903F-070-12 | 38.1 | 31.81 | 6.7 | 70 | 64 | 111 | 73 | AN6227-19 |
| | 12 | 6428945 | GX903F-090-12 | 38.1 | 31.81 | 6.7 | 90 | 64 | 111 | 73 | AN6227-19 |
| | 12 | 6420856 | GX903F-100-12 | 38.1 | 31.81 | 6.7 | 100 | 64 | 111 | 73 | AN6227-19 |
| | 12 | 6430681 | GX903F-105-12 | 38.1 | 31.81 | 6.7 | 105 | 64 | 111 | 73 | AN6227-19 |
| | 12 | 6420860 | GX903F-120-12 | 38.1 | 31.81 | 6.7 | 120 | 64 | 111 | 73 | AN6227-19 |
| | 12 | 6420816 | GX903F-130-12 | 38.1 | 31.81 | 6.7 | 130 | 64 | 111 | 73 | AN6227-19 |
| | 12 | 6420864 | GX903F-150-12 | 38.1 | 31.81 | 6.7 | 150 | 64 | 111 | 73 | AN6227-19 |
| | 12 | 6428100 | GX903F-175-12 | 38.1 | 31.81 | 6.7 | 175 | 64 | 111 | 73 | AN6227-19 |
| 12 | 6420814 | GX903F-200-12 | 38.1 | 31.81 | 6.7 | 200 | 64 | 111 | 73 | AN6227-19 | |

CL: ホース切断時に差し引く長さ(参考値)



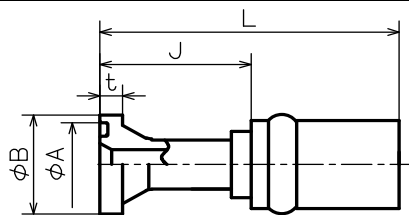
| ホース | ヘッド サイズ | コード | 品名 | ΦB | ΦA | t | F | J | L | CL | 適用Oリング |
|-----|---------------|--------------------|------------------------------|-----------------|------------------|----------------|----------------|---------------|----------------|---------------|---------------------|
| 19 | 16 | 6420862 | GX903F-1216 | 44.5 | 39.68 | 8 | 62 | 64 | 111 | 73 | AN6227-24 |
| | 16 | 6428760 | GX903F-080-1216 | 44.5 | 39.68 | 8 | 80 | 64 | 111 | 73 | AN6227-24 |
| | 16 | 6420857 | GX903F-100-1216 | 44.5 | 39.68 | 8 | 100 | 64 | 111 | 73 | AN6227-24 |
| | 16 | 6420858 | GX903F-110-1216 | 44.5 | 39.68 | 8 | 110 | 64 | 111 | 73 | AN6227-24 |
| | 16 | 6425110 | GX903F-120-1216 | 44.5 | 39.68 | 8 | 120 | 64 | 111 | 73 | AN6227-24 |
| | 16 | 6426367 | GX903F-130-1216 | 44.5 | 39.68 | 8 | 130 | 64 | 111 | 73 | AN6227-24 |
| | 16 | 6420866 | GX903F-150-1216 | 44.5 | 39.68 | 8 | 150 | 64 | 111 | 73 | AN6227-24 |
| | 20 | 6420863 | GX903F-1220 | 50.8 | 44.51 | 8 | 67 | 64 | 111 | 73 | AN6227-27 |
| | 20 | 6420843 | GX903F-090-1220 | 50.8 | 44.51 | 8 | 90 | 64 | 111 | 73 | AN6227-27 |
| 25 | 12 | 6429306 | GXB 903F-1612 | 38.1 | 31.81 | 6.7 | 55 | 60 | 116 | 70 | AN6227-19 |
| | 12 | 6429308 | GXB 903F-100-1612 | 38.1 | 31.81 | 6.7 | 100 | 60 | 116 | 70 | AN6227-19 |
| | 12 | 6429309 | GXB 903F-120-1612 | 38.1 | 31.81 | 6.7 | 120 | 60 | 116 | 70 | AN6227-19 |
| | 12 | 6429307 | GXB 903F-130-1612 | 38.1 | 31.81 | 6.7 | 130 | 60 | 116 | 70 | 2017生産中止 |
| | 12 | 6429310 | GXB 903F-150-1612 | 38.1 | 31.81 | 6.7 | 150 | 60 | 116 | 70 | 2017生産中止 |
| | 12 | 6433480 | GX903F-170-1612 | 38.1 | 31.81 | 6.7 | 170 | 60 | 116 | 70 | AN6227-19 |
| | 16 | 6429204 | GXC 903F-16 | 44.5 | 39.68 | 8 | 63 | 76 | 132 | 86 | AN6227-24 |
| | 16 | 6429280 | GXA 903F-070-16 | 44.5 | 39.68 | 8 | 70 | 76 | 132 | 86 | AN6227-24 |
| | 16 | 6429376 | GXB 903F-080-16 | 44.5 | 39.68 | 8 | 80 | 76 | 132 | 86 | AN6227-24 |
| | 16 | 6429377 | GXC 903F-090-16 | 44.5 | 39.68 | 8 | 90 | 76 | 132 | 86 | AN6227-24 |
| | 16 | 6429205 | GXC 903F-100-16 | 44.5 | 39.68 | 8 | 100 | 76 | 132 | 86 | AN6227-24 |
| | 16 | 6429378 | GXC 903F-110-16 | 44.5 | 39.68 | 8 | 110 | 76 | 132 | 86 | AN6227-24 |
| | 16 | 6429281 | GXC 903F-120-16 | 44.5 | 39.68 | 8 | 120 | 76 | 132 | 86 | AN6227-24 |
| | 16 | 6429352 | GXC 903F-130-16 | 44.5 | 39.68 | 8 | 130 | 76 | 132 | 86 | AN6227-24 |
| | 16 | 6429353 | GXC 903F-135-16 | 44.5 | 39.68 | 8 | 135 | 76 | 132 | 86 | AN6227-24 |
| | 16 | 6429200 | GXC 903F-150-16 | 44.5 | 39.68 | 8 | 150 | 76 | 132 | 86 | AN6227-24 |
| | 16 | 6429379 | GXB 903F-160-16 | 44.5 | 39.68 | 8 | 160 | 76 | 132 | 86 | AN6227-24 |
| | 16 | 6429381 | GXB 903F-210-16 | 44.5 | 39.68 | 8 | 210 | 76 | 132 | 86 | AN6227-24 |
| | 16 | 6429380 | GXB 903F-330-16 | 44.5 | 39.68 | 8 | 330 | 76 | 132 | 86 | AN6227-24 |
| | 20 | 6429282 | GXC 903F-1620 | 50.8 | 44.51 | 8 | 68 | 76 | 132 | 86 | AN6227-27 |
| | 20 | 6429387 | GXC 903F-090-1620 | 50.8 | 44.51 | 8 | 90 | 76 | 132 | 86 | 2017生産中止 |
| | 20 | 6429388 | GXC 903F-120-1620 | 50.8 | 44.51 | 8 | 120 | 76 | 132 | 86 | AN6227-27 |
| | 20 | 6429389 | GXB 903F-150-1620 | 50.8 | 44.51 | 8 | 150 | 76 | 132 | 86 | AN6227-27 |
| | 24 | 6429392 | GXC 903F-1624 | 60.3 | 53.84 | 8 | 70 | 76 | 132 | 86 | AN6230-3 |

CL: ホース切断時に差し引く長さ(参考値)



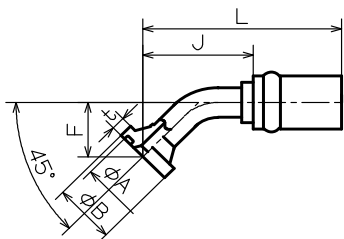
| ホース | ヘッド サイズ | コード | 品名 | ベンド 角度 | φB | φA | t | F | J | L | CL | 適用Oリング |
|-----|---------------|--------------------|--------------------------|------------------|-----------------|------------------|----------------|---------------|---------------|----------------|---------------|---------------------|
| 6 | | | | | | | | | | | | |
| 9 | | | | | | | | | | | | |
| 12 | 08 | 6431694 | GX303F-08 | 30° | 30.2 | 25.46 | 6.7 | 15 | 64 | 99 | 70 | AN6227-15 |
| | 12 | 6420245 | GX303F-0812 | 30° | 38.1 | 31.81 | 6.7 | 20 | 73 | 108 | 79 | AN6227-19 |
| 15 | 12 | 6421177 | GX223F-1012 | 22.5° | 38.1 | 31.81 | 6.7 | 12 | 68 | 113 | 75 | AN6227-19 |
| 19 | 12 | 6422490 | GX113F-12 | 11° | 38.1 | 31.81 | 6.7 | 6 | 64 | 111 | 73 | AN6227-19 |
| | 12 | 6420828 | GX113F-012-12 | 11° | 38.1 | 31.81 | 6.7 | 12 | 95 | 142 | 104 | AN6227-19 |
| | 12 | 6420829 | GX223F-12 | 22.5° | 38.1 | 31.81 | 6.7 | 12 | 68 | 115 | 77 | AN6227-19 |
| | 12 | 6420831 | GX303F-12 | 30° | 38.1 | 31.81 | 6.7 | 17 | 69 | 115 | 77 | AN6227-19 |
| | 12 | 6420837 | GX603F-12 | 60° | 38.1 | 31.81 | 6.7 | 34 | 84 | 130 | 92 | AN6227-19 |
| | 12 | 6420840 | GX703F-12 | 70° | 38.1 | 31.81 | 6.7 | 43 | 82 | 129 | 91 | AN6227-19 |
| | 12 | 6433478 | GX703F-080-12 | 70° | 38.1 | 31.81 | 6.7 | 80 | 96 | 142 | 104 | AN6227-19 |
| | 12 | 6424843 | GX1103F-12 | 110° | 38.1 | 31.81 | 6.7 | 66 | 81 | 128 | 90 | AN6227-19 |
| | 16 | 6428707 | GX153F-021-1216J140 | 15° | 44.5 | 39.68 | 8 | 21 | 140 | 187 | 149 | AN6227-24 |
| | 16 | 6431291 | GX153F-34J200-1216 | 15° | 44.5 | 39.68 | 8 | 34 | 200 | 247 | 209 | AN6227-24 |
| | 16 | 6420830 | GX223F-1216 | 22.5° | 44.5 | 39.68 | 8 | 15 | 74 | 121 | 83 | AN6227-24 |
| | 16 | 6420832 | GX303F-1216 | 30° | 44.5 | 39.68 | 8 | 21 | 75 | 121 | 83 | AN6227-24 |
| | 16 | 6420838 | GX603F-1216 | 60° | 44.5 | 39.68 | 8 | 43 | 75 | 122 | 84 | AN6227-24 |
| | 16 | 6420839 | GX673F-1216 | 67° | 44.5 | 39.68 | 8 | 48 | 74 | 121 | 83 | AN6227-24 |
| 25 | 12 | 6429303 | GXB 223F-1612 | 22.5° | 38.1 | 31.81 | 6.7 | 12 | 68 | 124 | 78 | 2017生産中止 |
| | 12 | 6429305 | GXA 603F-1612 | 60° | 38.1 | 31.81 | 6.7 | 34 | 84 | 140 | 94 | 2017生産中止 |
| | 12 | 6429383 | GXA 703F-1612 | 70° | 38.1 | 31.81 | 6.7 | 43 | 82 | 138 | 92 | AN6227-19 |
| | 16 | 6429373 | GXB 103F-16 | 10° | 44.5 | 39.68 | 8 | 9 | 87 | 143 | 97 | 2017生産中止 |
| | 16 | 6429374 | GXC 153F-16 | 15° | 44.5 | 39.68 | 8 | 9 | 77 | 133 | 87 | AN6227-24 |
| | 16 | 6431914 | GX153F-27J205-16 | 15° | 44.5 | 39.68 | 8 | 27 | 205 | 261 | 215 | AN6227-24 |
| | 16 | 6429202 | GXC 223F-16 | 22.5° | 44.5 | 39.68 | 8 | 15 | 81 | 137 | 91 | AN6227-24 |
| | 16 | 6429277 | GXC 303F-16 | 30° | 44.5 | 39.68 | 8 | 20 | 82 | 138 | 92 | AN6227-24 |
| | 16 | 6436026 | GX303F-055J185-16 | 30° | 44.5 | 39.68 | 8 | 55 | 185 | 214 | 195 | AN6227-24 |
| | 16 | 6429351 | GXC 603F-16 | 60° | 44.5 | 39.68 | 8 | 40 | 103 | 159 | C | AN6227-24 |
| | 16 | 6429279 | GXC 703F-16 | 70° | 44.5 | 39.68 | 8 | 49 | 95 | 151 | 105 | AN6227-24 |
| | 16 | 6429382 | GXB 1153F-16 | 115° | 44.5 | 39.68 | 8 | 105 | 89 | 145 | 99 | AN6227-24 |
| | 20 | 6429384 | GXB 223F-1620 | 22.5° | 50.8 | 44.51 | 8 | 15 | 81 | 137 | 91 | AN6227-27 |
| | 20 | 6429278 | GXB 303F-1620 | 30° | 50.8 | 44.51 | 8 | 23 | 86 | 142 | 97 | AN6227-27 |
| | 20 | 6429385 | GXC 603F-1620 | 60° | 50.8 | 44.51 | 8 | 44 | 103 | 159 | 113 | AN6227-27 |
| | 20 | 6429386 | GXB 673F-1620 | 67° | 50.8 | 44.51 | 8 | 50 | 101 | 157 | 111 | AN6227-27 |
| | 24 | 6429390 | GXC 223F-1624 | 22.5° | 60.3 | 53.84 | 8 | 15 | 81 | 137 | 91 | AN6230-3 |

CL: ホース切断時に差し引く長さ(参考値)



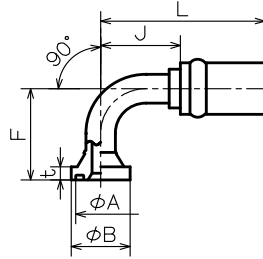
| ホース | ヘッド サイズ | コード | 品名 | ΦB | ΦA | t | J | L | | CL | 適用Oリング |
|-----|------------|---------|-------------|------|-------|------|----|-----|--|----|-----------|
| 6 | | | | | | | | | | | |
| 9 | 08 | 6420256 | GX6F-0608 | 31.8 | 25.46 | 7.75 | 51 | 76 | | 56 | AN6227-15 |
| 12 | 08 | 6420255 | GX6F-08 | 31.8 | 25.46 | 7.75 | 51 | 86 | | 57 | AN6227-15 |
| | 12 | 6420254 | GX6F-0812 | 41.3 | 31.81 | 8.75 | 20 | 55 | | 26 | AN6227-19 |
| 15 | 12 | 6422495 | GX6F-1012 | 41.3 | 31.81 | 8.75 | 54 | 90 | | 61 | AN6227-19 |
| | 16 | 6426498 | GX6F-1016 | | | | | | | | |
| 19 | 08 | 6426170 | GX6F-1208 | 31.8 | 25.46 | 7.75 | 54 | 100 | | 62 | AN6227-15 |
| | 12 | 6420867 | GX6F-12 | 41.3 | 31.81 | 8.75 | 54 | 101 | | 63 | AN6227-19 |
| | 16 | 6420868 | GX6F-1216 | 47.6 | 39.68 | 9.5 | 65 | 112 | | 74 | AN6227-24 |
| 25 | 12 | 6429228 | GXB 6F-1612 | 41.3 | 31.81 | 8.75 | 78 | 134 | | 88 | AN6227-19 |
| | 16 | 6429227 | GXB 6F-16 | 47.6 | 39.68 | 9.5 | 65 | 121 | | 75 | AN6227-24 |
| | 20 | 6429229 | GXB 6F-1620 | 54.0 | 44.51 | 10.3 | 65 | 121 | | 75 | AN6227-27 |
| | 24 | 6429230 | GXA 6F-1624 | 63.5 | 53.84 | 12.6 | 30 | 86 | | 40 | AN6230-3 |

CL:ホース切断時に差し引く長さ(参考値)



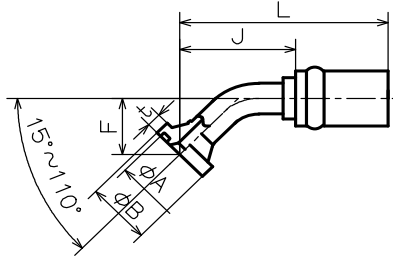
| ホース | ヘッド サイズ | コード | 品名 | ΦB | ΦA | t | F | J | L | CL | 適用Oリング |
|-----|---------------|--------------------|--------------------------|-----------------|------------------|-----------------|---------------|---------------|----------------|----------------|---------------------|
| 6 | | | | | | | | | | | |
| 9 | | | | | | | | | | | |
| 12 | 08 | 6420257 | GX456F-08 | 31.8 | 25.46 | 7.75 | 23 | 52 | 87 | 58 | AN6227-15 |
| 15 | 12 | 6422488 | GX456F-1012 | 41.3 | 31.81 | 8.75 | 27 | 65 | 101 | 72 | AN6227-19 |
| | 12 | 6430146 | GX456F-062-1012 | 41.3 | 31.81 | 8.75 | 62 | 100 | 136 | 107 | AN6227-19 |
| 19 | 08 | 6425779 | GX456F-1208 | 31.8 | 25.46 | 7.75 | 25 | 71 | 118 | 80 | AN6227-15 |
| | 12 | 6420869 | GX456F-12 | 41.3 | 31.81 | 8.75 | 27 | 73 | 128 | 82 | AN6227-19 |
| | 12 | 6422537 | GX456F-070-12 | 41.3 | 31.81 | 8.75 | 70 | 117 | 163 | 125 | AN6227-19 |
| | 12 | 6425854 | GX456F-080-12 | 41.3 | 31.81 | 8.75 | 80 | 127 | 173 | 135 | AN6227-19 |
| | 16 | 6422515 | GX456F-1216 | 47.6 | 39.68 | 9.5 | 31 | 78 | 124 | 86 | AN6227-24 |
| | 16 | 6422536 | GX456F-060-1216 | 47.6 | 39.68 | 9.5 | 60 | 107 | 153 | 115 | AN6227-24 |
| 25 | 12 | 6429311 | GXA 456F-1612 | 41.3 | 31.81 | 8.75 | 27 | 73 | 129 | 83 | 2017生産中止 |
| | 16 | 6429290 | GXC 456F-16 | 47.6 | 39.68 | 9.5 | 34 | 77 | 133 | 88 | AN6227-24 |
| | 16 | 6429283 | GXB 456F-080-16 | 47.6 | 39.68 | 9.5 | 80 | 123 | 179 | 134 | AN6227-24 |
| | 16 | 6434235 | GX456F-050-16 | 47.6 | 39.68 | 9.5 | 50 | 94 | 150 | 104 | AN6227-24 |
| | 20 | 6429354 | GXC 456F-1620 | 54.0 | 44.51 | 10.3 | 34 | 78 | 134 | 88 | AN6227-27 |
| | 24 | 6429397 | GXB 456F-1624 | 63.5 | 53.84 | 12.6 | 43 | 91 | 147 | 101 | 2017生産中止 |

CL:ホース切断時に差し引く長さ(参考値)



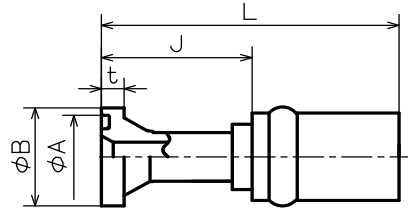
| ホース | ヘッド サイズ | コード | 品名 | ΦB | ΦA | t | F | J | L | CL | 適用Oリング |
|-----|------------|--------------------|----------------------------|-----------------|------------------|----------------|----------------|---------------|----------------|---------------|-----------|
| 6 | | | | | | | | | | | |
| 9 | | | | | | | | | | | |
| 12 | 08 | 6420258 | GX906F-08 | 31.8 | 25.46 | 7.75 | 44 | 52 | 87 | 58 | AN6227-15 |
| | 12 | 6429142 | GX906F-0812 | 41.3 | 31.81 | 8.75 | 53 | 52 | 87 | 58 | AN6227-19 |
| 15 | 12 | 6424745 | GX906F-1012 | 41.3 | 31.81 | 8.75 | 56 | 64 | 100 | 71 | AN6227-19 |
| | 12 | 6431819 | GX906F-070-1012 | 41.3 | 31.81 | 8.75 | 70 | 64 | 100 | 71 | AN6227-19 |
| | 12 | 6431210 | GX906F-100-1012 | 41.3 | 31.81 | 8.75 | 100 | 64 | 100 | 71 | AN6227-19 |
| | 16 | 6424746 | GX906F-1016 | 47.6 | 39.68 | 9.5 | 65 | 64 | 100 | 71 | AN6227-24 |
| | 16 | 6424226 | GX906F-125-1016 | 47.6 | 39.68 | 9.5 | 125 | 64 | 100 | 71 | AN6227-24 |
| 19 | 08 | 6425531 | GX906F-1208 | 31.8 | 25.46 | 7.75 | 53 | 64 | 111 | 73 | AN6227-15 |
| | 12 | 6420870 | GX906F-12 | 41.3 | 31.81 | 8.75 | 56 | 64 | 111 | 73 | AN6227-19 |
| | 12 | 6420813 | GX906F-070-12 | 41.3 | 31.81 | 8.75 | 70 | 64 | 111 | 73 | AN6227-19 |
| | 12 | 6420815 | GX906F-100-12 | 41.3 | 31.81 | 8.75 | 100 | 64 | 111 | 73 | AN6227-19 |
| | 12 | 6424834 | GX906F-120-12 | 41.3 | 31.81 | 8.75 | 120 | 64 | 111 | 73 | AN6227-19 |
| | 12 | 6421072 | GX906F-125-12 | 41.3 | 31.81 | 8.75 | 125 | 64 | 111 | 73 | AN6227-19 |
| | 12 | 6422538 | GX906F-150-12 | 41.3 | 31.81 | 8.75 | 150 | 64 | 111 | 73 | AN6227-19 |
| | 16 | 6420871 | GX906F-1216 | 47.6 | 39.68 | 9.5 | 65 | 64 | 111 | 73 | AN6227-24 |
| | 16 | 6422539 | GX906F-075-1216 | 47.6 | 39.68 | 9.5 | 75 | 64 | 111 | 73 | AN6227-24 |
| | 16 | 6420872 | GX906F-100-1216 | 47.6 | 39.68 | 9.5 | 100 | 64 | 111 | 73 | AN6227-24 |
| | 16 | 6424803 | GX906F-120-1216 | 47.6 | 39.68 | 9.5 | 120 | 64 | 111 | 73 | AN6227-24 |
| | 16 | 6420873 | GX906F-125-1216 | 47.6 | 39.68 | 9.5 | 125 | 64 | 111 | 73 | 2017生産中止 |
| | 16 | 6425532 | GX906F-140-1216 | 47.6 | 39.68 | 9.5 | 140 | 64 | 111 | 73 | AN6227-24 |
| | 16 | 6424804 | GX906F-150-1216 | 47.6 | 39.68 | 9.5 | 150 | 64 | 111 | 73 | AN6227-24 |
| 25 | 12 | 6429312 | GXB 906F-1612 | 41.3 | 31.81 | 8.75 | 57 | 64 | 120 | 74 | AN6227-19 |
| | 12 | 6429313 | GXB 906F-120-1612 | 41.3 | 31.81 | 8.75 | 120 | 64 | 120 | 74 | AN6227-19 |
| | 16 | 6429206 | GXC 906F-16 | 47.6 | 39.68 | 9.5 | 65 | 76 | 132 | 86 | AN6227-24 |
| | 16 | 6429207 | GXC 906F-075-16 | 47.6 | 39.68 | 9.5 | 75 | 76 | 132 | 86 | AN6227-24 |
| | 16 | 6429284 | GXB 906F-080-16 | 47.6 | 39.68 | 9.5 | 80 | 76 | 132 | 86 | AN6227-24 |
| | 16 | 6429208 | GXC 906F-090-16 | 47.6 | 39.68 | 9.5 | 90 | 76 | 132 | 86 | AN6227-24 |
| | 16 | 6429356 | GXC 906F-100-16 | 47.6 | 39.68 | 9.5 | 100 | 76 | 132 | 86 | AN6227-24 |
| | 16 | 6429209 | GXC 906F-120-16 | 47.6 | 39.68 | 9.5 | 120 | 76 | 132 | 86 | AN6227-24 |
| | 16 | 6429285 | GXC 906F-140-16 | 47.6 | 39.68 | 9.5 | 140 | 76 | 132 | 86 | AN6227-24 |
| | 16 | 6434047 | GX906F-150-16 | 47.6 | 39.68 | 9.5 | 150 | 76 | 132 | 86 | AN6227-24 |
| | 16 | 6430135 | GX906F-200-16 | 47.6 | 39.68 | 9.5 | 200 | 76 | 132 | 86 | AN6227-24 |
| | 20 | 6429357 | GXC 906F-1620 | 54.0 | 44.51 | 10.3 | 71 | 76 | 132 | 86 | AN6227-27 |
| | 20 | 6429394 | GXB 906F-100-1620 | 54.0 | 44.51 | 10.3 | 100 | 76 | 132 | 86 | AN6227-27 |
| | 20 | 6429395 | GXB 906F-130-1620 | 54.0 | 44.51 | 10.3 | 130 | 76 | 132 | 86 | AN6227-27 |
| | 20 | 6429396 | GXB 906F-185-1620 | 54.0 | 44.51 | 10.3 | 185 | 76 | 132 | 86 | AN6227-27 |
| | 24 | 6429398 | GXB 906F-1624 | 63.5 | 53.84 | 12.6 | 73 | 76 | 132 | 86 | AN6230-3 |

CL: ホース切断時に差し引く長さ(参考値)



| ホース | ヘッド サイズ | コード | 品名 | ベンド 角度 | ΦB | ΦA | t | F | J | L | CL | 適用Oリング |
|-----|---------------|--------------------|--------------------------|----------------|-----------------|------------------|-----------------|---------------|---------------|----------------|---------------|---------------------|
| 6 | | | | | | | | | | | | |
| 9 | | | | | | | | | | | | |
| 12 | | | | | | | | | | | | |
| 15 | | | | | | | | | | | | |
| 19 | | | | | | | | | | | | |
| 25 | 16 | 6429393 | GXC 606F-050-16 | 60° | 47.6 | 39.68 | 9.5 | 50 | 78 | 134 | 88 | AN6227-24 |
| | 16 | 6429199 | GXC 606F-095-16 | 60° | 47.6 | 39.68 | 9.5 | 95 | 104 | 160 | 114 | AN6227-24 |
| | 16 | 6429345 | GXC 706F-16 | 70° | 47.6 | 39.68 | 9.5 | 49 | 95 | 151 | 105 | AN6227-24 |
| | 16 | 6429355 | GXC 756F-16 | 75° | 47.6 | 39.68 | 9.5 | 58 | 82 | 138 | 92 | AN6227-24 |
| | 20 | 6429346 | GXC 756F-1620 | 75° | 54.0 | 44.51 | 10.3 | 62 | 82 | 138 | 92 | 2017生産中止 |
| | 20 | 6432142 | GX606F-070-1620 | 60° | 54.0 | 44.51 | 10.3 | 70 | 90 | 146 | 100 | AN6227-27 |
| | | | | | | | | | | | | |

CL: ホース切断時に差し引く長さ(参考値)

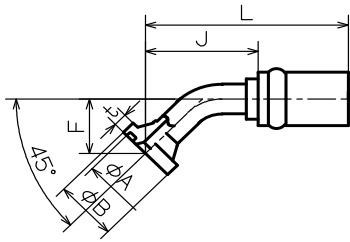


| ホース | ヘッド サイズ | コード | 品名 | φB | φA | t | J | L | | CL | 適用Oリング |
|-----|------------|---------|------------|------|------|-----|----|-----|--|----|------------|
| 6 | | | | | | | | | | | |
| 9 | | | | | | | | | | | |
| 12 | 10 | 6420242 | GXKMF-0810 | 34.2 | 28.0 | 6.7 | 54 | 89 | | 60 | P22A |
| 15 | 10 | 6421102 | GXKMF-10 | 34.2 | 28.0 | 6.7 | 67 | 103 | | 74 | P22A |
| 19 | 10 | 6430151 | GXKMF-1210 | 34.2 | 28.0 | 6.7 | 54 | 101 | | 63 | P22A |
| | 12 | 6430048 | GXKMF-12 | 38.1 | 31.0 | 6.7 | 54 | 101 | | 63 | |
| 25 | 16 | 6429233 | GXA KMF-16 | 44.5 | 38.0 | 8 | 65 | 121 | | 75 | 10Aタイプ P32 |

CL:ホース切断時に差し引く長さ(参考値)

金具タイプ No. 45KMF

KESタイプフランジ 45° ベンド

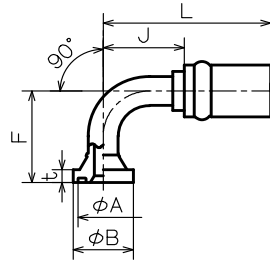


| ホース | ヘッド サイズ | コード | 品名 | φB | φA | t | F | J | L | CL | 適用Oリング |
|-----|------------|---------|--------------|------|------|-----|----|------|-----|----|------------|
| 6 | | | | | | | | | | | |
| 9 | | | | | | | | | | | |
| 12 | 10 | 6434012 | GX45KMF-0810 | 34.2 | 28.0 | 6.7 | 26 | 64.0 | 99 | 70 | P22A |
| 15 | 10 | 6421184 | GX45KMF-10 | 34.2 | 28.0 | 6.7 | 26 | 64 | 100 | 71 | P22A |
| 19 | 10 | 6426073 | GX45KMF-1210 | 34.2 | 28.0 | 6.7 | 26 | 64 | 111 | 73 | P22A |
| | 12 | 6430049 | GX45KMF-12 | 38.1 | 31.0 | 6.7 | 26 | 73 | 119 | 81 | |
| 25 | 16 | 6429403 | GXA 45KMF-16 | 44.5 | 38.0 | 8.0 | 32 | 81 | 137 | 91 | 10Aタイプ P32 |
| | | | | | | | | | | | |

CL:ホース切断時に差し引く長さ(参考値)

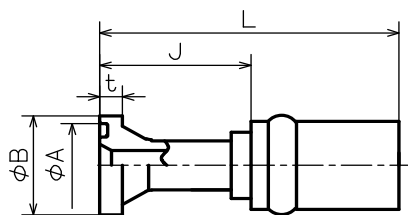
金具タイプ No. 90KMF

KESタイプフランジ 90° ベンド



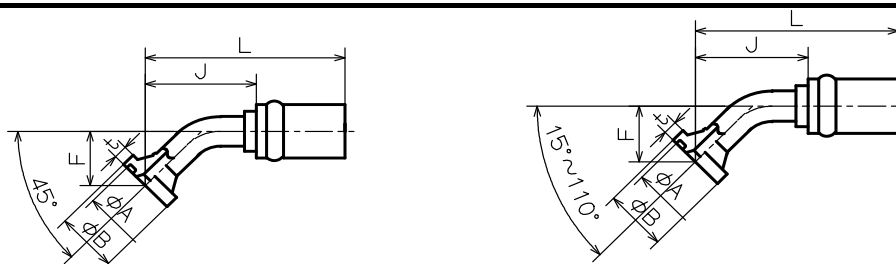
| ホース | ヘッド サイズ | コード | 品名 | φB | φA | t | F | J | L | CL | 適用Oリング |
|-----|------------|---------|----------------|------|------|-----|----|----|-----|----|------------|
| 6 | | | | | | | | | | | |
| 9 | | | | | | | | | | | |
| 12 | 10 | 6424030 | GX90KMF-0810 | 34.2 | 28.0 | 6.7 | 47 | 52 | 87 | 58 | P22A |
| 15 | 10 | 6421185 | GX90KMF-10 | 34.2 | 28.0 | 6.7 | 56 | 50 | 86 | 57 | P22A |
| | 10 | 6426458 | GX90KMF-083-10 | 34.2 | 28.0 | 6.7 | 83 | 50 | 86 | 57 | P22A |
| 19 | 10 | 6425656 | GX90KMF-1210 | 34.2 | 28.0 | 6.7 | 56 | 64 | 111 | 73 | P22A |
| | 12 | 6430050 | GX90KMF-12 | 38.1 | 31.0 | 6.7 | 55 | 64 | 111 | 73 | |
| 25 | 16 | 6429289 | GXA 90KMF-16 | 44.5 | 38.0 | 8.0 | 77 | 76 | 132 | 86 | 10Aタイプ P32 |

CL:ホース切断時に差し引く長さ(参考値)



| ホース | ヘッド サイズ | コード | 品名 | ΦB | ΦA | T | J | L | CL | 適用リング (CAT角リング品番) |
|-----|------------------|--------------------|-------------------------|-----------------|------------------|------------------|---------------|----------------|---------------|----------------------|
| 6 | | | | | | | | | | |
| | | | | | | | | | | |
| 9 | | | | | | | | | | |
| | | | | | | | | | | |
| 12 | | | | | | | | | | |
| | | | | | | | | | | |
| 15 | | | | | | | | | | |
| | | | | | | | | | | |
| 19 | 12CAT | 6422494 | GXCTF-12 | 41.3 | 31.75 | 14.22 | 77 | 124 | 86 | Φ25.4X5t (IP-3702) |
| | 12CAT | 6425782 | GXCTF-120-12 | 41.3 | 31.75 | 14.22 | 120 | 167 | 129 | Φ25.4X5t (IP-3702) |
| | 16CAT | 6424815 | GXCTF-1216 | 47.6 | 38.1 | 14.22 | 77 | 124 | 86 | Φ31.9X5t (IP-3703) |
| | 20CAT | 6425548 | GXCTF-1220 | 54.0 | 44.5 | 14.22 | 68 | 115 | 77 | Φ38.2X5t (IP-3704) |
| 25 | 12CAT | 6429231 | GXA CTF-1612 | 41.3 | 31.75 | 14.22 | 77 | 133 | 87 | 2017生産中止 |
| | 16CAT | 6429286 | GXA CTF-16 | 47.6 | 38.1 | 14.22 | 77 | 133 | 87 | Φ31.9X5t (IP-3703) |
| | 20CAT | 6429232 | GXA CTF-1620 | 54.0 | 44.5 | 14.22 | 68 | 124 | 78 | Φ38.2X5t (IP-3704) |
| | | | | | | | | | | |

CL:ホース切断時に差し引く長さ(参考値)

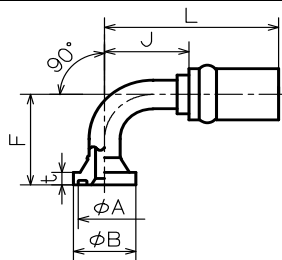


| ホース | ヘッド サイズ | コード | 品名 | ベンド 角度 | ΦB | ΦA | t | F | J | L | CL | 適用Oリング (CAT角リング品番) |
|-----|------------|---------|----------------|-----------|------|-------|-------|----|----|-----|----|-----------------------|
| 6 | | | | | | | | | | | | |
| 9 | | | | | | | | | | | | |
| 12 | | | | | | | | | | | | |
| 15 | | | | | | | | | | | | |
| 19 | 12CAT | 6422489 | GX45CTF-12 | 45° | 41.3 | 31.75 | 14.22 | 33 | 79 | 125 | 87 | Φ 25.4X5t (IP-3702) |
| | 16CAT | 6424784 | GX45CTF-1216 | 45° | 47.6 | 38.1 | 14.22 | 33 | 79 | 125 | 87 | Φ 31.9X5t (IP-3703) |
| 25 | 16CAT | 6429212 | GXC 45CTF-16 | 45° | 47.6 | 38.1 | 14.22 | 37 | 89 | 145 | 99 | Φ 31.9X5t (IP-3703) |
| | 16CAT | 6434893 | GX60CTF-050-16 | 60° | 47.6 | 38.1 | 14.22 | 50 | 88 | 144 | 99 | Φ 31.9X5t (IP-3703) |
| | 20CAT | 6429399 | GXC 45CTF-1620 | 45° | 54.0 | 44.5 | 14.22 | 37 | 80 | 136 | 90 | Φ 38.2X5t (IP-3704) |

CL:ホース切断時に差し引く長さ(参考値)

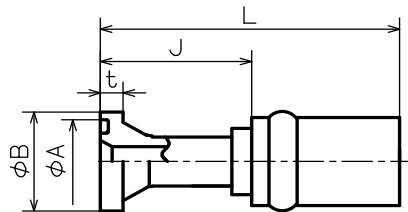
金具タイプ No. 90CTF

CATタイプフランジ 90° ベンド



| ホース | ヘッド サイズ | コード | 品名 | ΦB | ΦA | t | F | J | L | CL | 適用Oリング (CAT角リング品番) |
|-----|------------|---------|------------------|------|-------|-------|-----|----|-----|----|-----------------------|
| 6 | | | | | | | | | | | |
| | | | | | | | | | | | |
| 9 | | | | | | | | | | | |
| | | | | | | | | | | | |
| 12 | | | | | | | | | | | |
| | | | | | | | | | | | |
| 15 | | | | | | | | | | | |
| | | | | | | | | | | | |
| 19 | 12CAT | 6421070 | GX90CTF-12 | 41.3 | 31.75 | 14.22 | 68 | 64 | 111 | 73 | Φ25.4X5t (IP-3702) |
| | 12CAT | 6431926 | GC90CTF-100-12 | 41.3 | 31.75 | 14.22 | 100 | 64 | 111 | 73 | Φ25.4X5t (IP-3702) |
| | 12CAT | 6424460 | GX90CTF-120-12 | 41.3 | 31.75 | 14.22 | 120 | 64 | 111 | 73 | Φ25.4X5t (IP-3702) |
| | 16CAT | 6425549 | GX90CTF-1216 | 47.6 | 38.1 | 14.22 | 65 | 64 | 111 | 73 | Φ31.9X5t (IP-3703) |
| | 16CAT | 6428131 | GX90CTF-130-1216 | 47.6 | 38.1 | 14.22 | 130 | 64 | 111 | 73 | Φ31.9X5t (IP-3703) |
| 25 | 12CAT | 6429314 | GXA 90CTF-1612 | 41.3 | 31.75 | 14.2 | 68 | 64 | 120 | 74 | Φ25.4X5t (IP-3702) |
| | 16CAT | 6429213 | GXC 90CTF-16 | 47.6 | 38.1 | 14.2 | 70 | 76 | 132 | 86 | Φ31.9X5t (IP-3703) |
| | 16CAT | 6429400 | GXC 90CTF-083-16 | 47.6 | 38.1 | 14.2 | 83 | 76 | 132 | 86 | Φ31.9X5t (IP-3703) |
| | 16CAT | 6429287 | GXC 90CTF-120-16 | 47.6 | 38.1 | 14.2 | 120 | 76 | 132 | 86 | Φ31.9X5t (IP-3703) |
| | 16CAT | 6429401 | GXB 90CTF-135-16 | 47.6 | 38.1 | 14.2 | 135 | 76 | 132 | 86 | Φ31.9X5t (IP-3703) |
| | 16CAT | 6429402 | GXB 90CTF-150-16 | 47.6 | 38.1 | 14.2 | 150 | 76 | 132 | 86 | Φ31.9X5t (IP-3703) |
| | 20CAT | 6429288 | GXC 90CTF-1620 | 54.0 | 44.5 | 14.2 | 74 | 76 | 132 | 86 | Φ38.2X5t (IP-3704) |
| | 20CAT | 6433570 | GX90CTF-150-1620 | 54.0 | 44.5 | 14.2 | 150 | 76 | 132 | 86 | Φ38.2X5t (IP-3704) |

CL: ホース切断時に差し引く長さ(参考値)

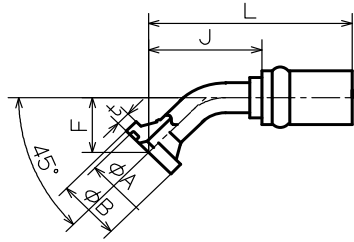


| ホース | ヘッド サイズ | コード | 品名 | ΦB | ΦA | t | J | L | | CL | 適用Oリング |
|-----|------------|---------|--------------|------|-------|-------|----|-----|--|----|-----------|
| 6 | | | | | | | | | | | |
| | | | | | | | | | | | |
| 9 | | | | | | | | | | | |
| | | | | | | | | | | | |
| 12 | | | | | | | | | | | |
| | | | | | | | | | | | |
| 15 | | | | | | | | | | | |
| | | | | | | | | | | | |
| 19 | 12 | 6424813 | GXSCF-12 | 41.3 | 31.81 | 14.22 | 77 | 124 | | 86 | AN6227-19 |
| | 16 | 6425212 | GXSCF-1216 | 47.6 | 39.68 | 14.22 | 60 | 106 | | 68 | AN6227-24 |
| 25 | 16 | 6429197 | GXB SCF-16 | 47.6 | 39.68 | 14.22 | 77 | 133 | | 87 | AN6227-24 |
| | 20 | 6429196 | GXA SCF-1620 | 54.0 | 44.51 | 14.22 | 68 | 124 | | 78 | AN6227-27 |

CL:ホース切断時に差し引く長さ(参考値)

金具タイプ No. 45SCF

CATタイプフランジ(JIS Oリングタイプ) 45° ベンド

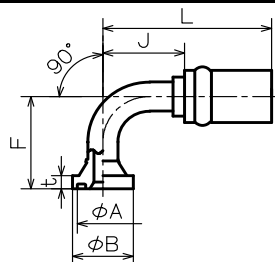


| ホース | ヘッド サイズ | コード | 品名 | ΦB | ΦA | t | F | J | L | CL | 適用Oリング |
|-----|------------|---------|----------------|------|-------|-------|----|----|-----|----|-----------|
| 6 | | | | | | | | | | | |
| | | | | | | | | | | | |
| 9 | | | | | | | | | | | |
| | | | | | | | | | | | |
| 12 | | | | | | | | | | | |
| | | | | | | | | | | | |
| 15 | | | | | | | | | | | |
| | | | | | | | | | | | |
| 19 | 12 | 6427697 | GX45SCF-12 | 41.3 | 31.81 | 14.22 | 33 | 79 | 125 | 87 | AN6227-19 |
| | 16 | 6427690 | GX45SCF-1216 | 47.6 | 39.68 | 14.22 | 33 | 79 | 125 | 87 | AN6227-24 |
| 25 | 16 | 6429361 | GXB 45SCF-16 | 47.6 | 39.68 | 14.22 | 37 | 89 | 145 | 99 | AN6227-24 |
| | 20 | 6429362 | GXB 45SCF-1620 | 54.0 | 44.51 | 14.22 | 37 | 80 | 136 | 90 | AN6227-27 |

CL:ホース切断時に差し引く長さ(参考値)

金具タイプ No. 90SCF

CATタイプフランジ(JIS Oリングタイプ) 90° ベンド



| ホース | ヘッド サイズ | コード | 品名 | ΦB | ΦA | t | F | J | L | CL | 適用Oリング |
|-----|---------------|--------------------|-----------------------------|-----------------|------------------|------------------|----------------|---------------|----------------|---------------|---------------------|
| 6 | | | | | | | | | | | |
| 9 | | | | | | | | | | | |
| 12 | | | | | | | | | | | |
| 15 | | | | | | | | | | | |
| 19 | 12 | 6425215 | GX90SCF-12 | 41.3 | 31.81 | 14.22 | 68 | 64 | 111 | 73 | AN6227-19 |
| | 12 | 6427696 | GX90SCF-120-12 | 41.3 | 31.81 | 14.22 | 120 | 64 | 111 | 73 | AN6227-19 |
| | 16 | 6427695 | GX90SCF-1216 | 47.6 | 39.68 | 14.22 | 65 | 64 | 111 | 73 | 2017生産中止 |
| 25 | 16 | 6429332 | GXB 90SCF-16 | 47.6 | 39.68 | 14.22 | 70 | 76 | 132 | 86 | AN6227-24 |
| | 16 | 6429363 | GXB 90SCF-120-16 | 47.6 | 39.68 | 14.22 | 120 | 76 | 132 | 86 | 2017生産中止 |
| | 16 | 6429364 | GXB 90SCF-135-16 | 47.6 | 39.68 | 14.22 | 135 | 76 | 132 | 86 | AN6227-24 |
| | 16 | 6429365 | GXB 90SCF-150-16 | 47.6 | 39.68 | 14.22 | 150 | 76 | 132 | 86 | AN6227-24 |
| | 20 | 6429198 | GXB 90SCF-1620 | 54.0 | 44.51 | 14.22 | 74 | 76 | 132 | 86 | AN6227-27 |

CL:ホース切断時に差し引く長さ(参考値)